



## FEATURES:

---



12 Occupancy



4 Bedroom



3 Bathroom



4 Car Parking



Pets Accepted



Spa Bath



Strict NO Party Policy



Full Kitchen



DVD Player



Washing Machine



Full Size Fridge



Tumble Dryer



BBQ

## ABOUT THIS PROPERTY

---

This show case house is loaded with fine appointments and a tiled spa pool. The great open plan living area is heated by an open fireplace, and the rear deck overlooks the reserve. This property is always in demand. There is a bathroom, drying room and laundry off the entry foyer and hall, as well as the stairs to the upper level. The spacious open plan living, dining, kitchen area is on the ground floor, with large decks on both sides of the living area. A comfortable sofa, lounge chairs and window seats provide plenty of seating for the whole group. There is a large dining table and a fully equipped and spacious kitchen, all heated by a wood fired heater.

On the middle level, there are three double bedrooms, a separate toilet, a bathroom with a shower and a bathroom with a large round spa bath. Up another set of stairs to the loft, there are 2 sets of bunks, 2 trundle beds, a window seat and TV for the younger members of the family.

## KITCHEN & COOKING FACILITIES

---

Fully equipped kitchen with electric stove top, oven, dishwasher, microwave, coffee machine and fridge / freezer.

BBQ

Coffee is a DeLonghi that takes illy coffee bags not pods

## BEDROOMS & BEDDING CONFIGURATION

---

This property sleeps 12 people.

There are 4 Bedrooms with the following configuration.

Bedroom 1 (1st floor): 1 x Queen bed

Bedroom 2 (1st floor): 1 x Queen bed

Bedroom 3 (1st floor): 1 x Queen bed

Loft (3rd floor): 2 x Single bunk beds 2 x single trundle beds (6 Share)

Linen, Towels and Bedding is provided for all beds.

## BATHROOMS

---

Three bathrooms

One bathroom on the ground entry level.

Two bathrooms on the middle level one with a large round spa bath, one with a separate shower.

2 separate toilets

## HEATING & COOLING FACILITIES

---

Wood fire and electric wall panel heaters

## LAUNDRY DETAILS

---

Front loading washing machine and clothes dryer

Drying room

## ENTERTAINMENT FACILITIES

---

2 x TV

DVD players

Stereo

## EXTRA FACILITIES

---

BBQ

## PARKING

---

4 Car parking spaces

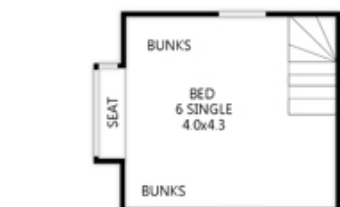
## PETS

---

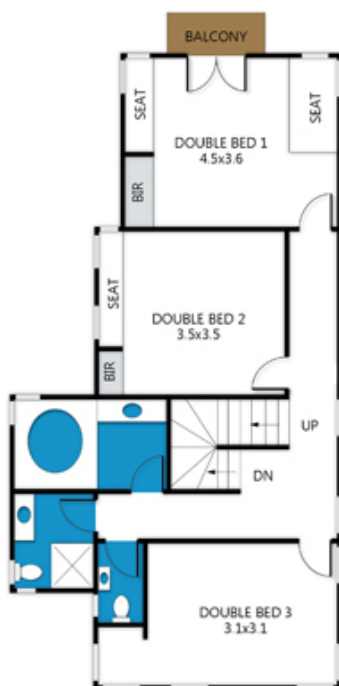
Pets allowed with a fee of \$50, please enquire with our staff for further information.

## Piz Gloria

5 Squatters Lane, Dinner Plain



SECOND FLOOR



FIRST FLOOR



GROUND FLOOR

archistyle

Whilst every attempt has been made to ensure the accuracy of this floorplan, measurements of doors, windows, rooms and any other items are approximate only. The producer or the agent cannot be held responsible for any errors, omissions or misstatements. This plan is for illustrative purposes only and should be used as such.

