



## FEATURES:

---



6 Occupancy



2 Bedroom



1 Bathroom



1 Car Parking



Strict NO Party Policy



Strict NO Pets Accepted



Full Kitchen



DVD Player



Linen Included



Microwave



Washing Machine



Family Friendly



Full Size Fridge



Tumble Dryer

## ABOUT THIS PROPERTY

---

Warm and cosy two bedroom, one bathroom chalet, located close to the ski run and the new snow play area. Ground floor has laundry in the entry foyer, which doubles as the drying room. Open plan living / dining / kitchen area is heated by a large open fire. The newly renovated bathroom with walk in shower, vanity and toilet is also on the ground floor. Upstairs is the main bedroom with a double bed. The second bedroom also has a double bed, as well as a set of bunks. The living area opens onto a large north facing deck.

## KITCHEN & COOKING FACILITIES

---

Full Kitchen:

- Full Size Fridge
- Microwave
- Full Size Oven
- 4 Burner Gas Cooker

## BEDROOMS & BEDDING CONFIGURATION

---

This property sleeps 6 people.

There are 2 Bedrooms with the following configuration.

Bedroom 1: 1 x Double Bed

Bedroom 2: 1 x Double Bed & 1 x Bunk Bed (2 singles)

Linen, Towels and Bedding is provided for all beds.

## BATHROOMS

---

1 bathroom with walk in shower

## HEATING & COOLING FACILITIES

---

- Open fireplace
- Gas space heater
- Panel heating

## LAUNDRY DETAILS

---

Washing machine and drying room

A drying cupboard is available at this property

## ENTERTAINMENT FACILITIES

---

Flat screen TV

Stereo

DVD player

## EXTRA FACILITIES

---

Large north facing deck

## PARKING

---

Parking for 1 vehicle

## PETS

---

Pets are not permitted

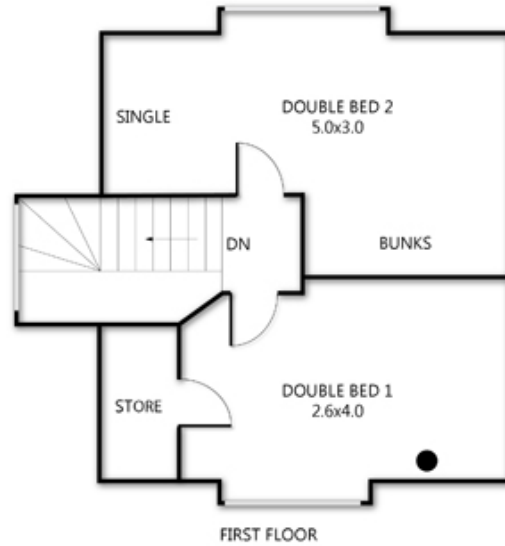
## SMOKING

---

Non smoking

## Coolong

8 Heritage Lane, Dinner Plain



archistyle

Whilst every attempt has been made to ensure the accuracy of this floorplan, measurements of doors, windows, rooms and any other items are approximate only. The producer or the agent cannot be held responsible for any errors, omissions or misstatements. This plan is for illustrative purposes only and should be used as such.

